



# ONE

AUTHENTIC PROPERTIES

---

We have only one task. To connect our discerning clients with ultimate destinations and a lifestyle that even the world's finest hotels could not provide.

Elegant surroundings come together with a personally-tailored service package to ensure that every aspect of your particular requirement is delivered impeccably.

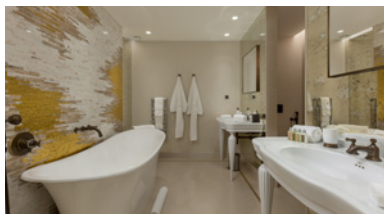
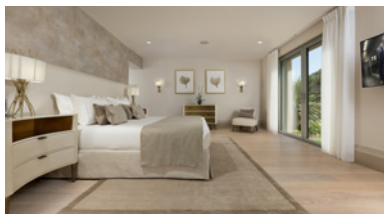
We have invested only in the world's most desirable destinations, combining our love of exceptional buildings with impeccable service.

*Luxury delivered every step of the way*

# ONE

VILLA CANOUBWEST





## VILLA CANOUBWEST



**BEDROOMS 6  
SLEEPS 12**



**HEATED  
OUTDOOR**



**NICE: 105<sup>KM</sup>  
CANNES: 80<sup>KM</sup>**

Adjacent to the residence of Brigitte Bardot, the actress who transformed St-Tropez to the glittering jet-set destination of today, Villa Canoubwest is located in an extremely private residential area of St Tropez. Tucked away on a quiet, private cul-de-sac, the other side of the peninsula from the popular Pampelonne Beach, this magnificent villa is a moment's stroll from the endearing waters of the picturesque Baie de Canebier. The perfect bay to moor your boat and enjoy an enchanting stretch of beach with its powdery sand and soothing umbrella pines.

To be whisked away to this exclusive retreat, visit [www.oneauthenticproperties.com](http://www.oneauthenticproperties.com)

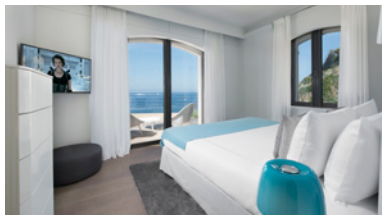
**VILLA SURFACE AREA 450<sup>M2</sup>  
LANDSCAPED GARDENS 8000<sup>M2</sup>**



# ONE

VILLA WATER'S EDGE





## VILLA WATER'S EDGE



**BEDROOMS 5**  
**SLEEPS 10**



80<sup>KM</sup>



**HEATED**  
**OUTDOOR**

**LIVING AREA 400<sup>M2</sup>**  
**LAND 5154<sup>M2</sup>**

The exclusive Villa Water's Edge is located in Saint Tropez's most prestigious private domain, Les Parcs, and is complete with a designer kitchen, bespoke furniture and fine art. This alluring and entrancing villa is designed with only the most luxurious of materials and boasts extensive covered terraces, breathtaking views, a heated infinity swimming pool, direct access to the sea and state of the art security. Guests of the Villa Water's Edge will receive a truly tailor-made service, provided by our highly experienced and discreet team of staff.

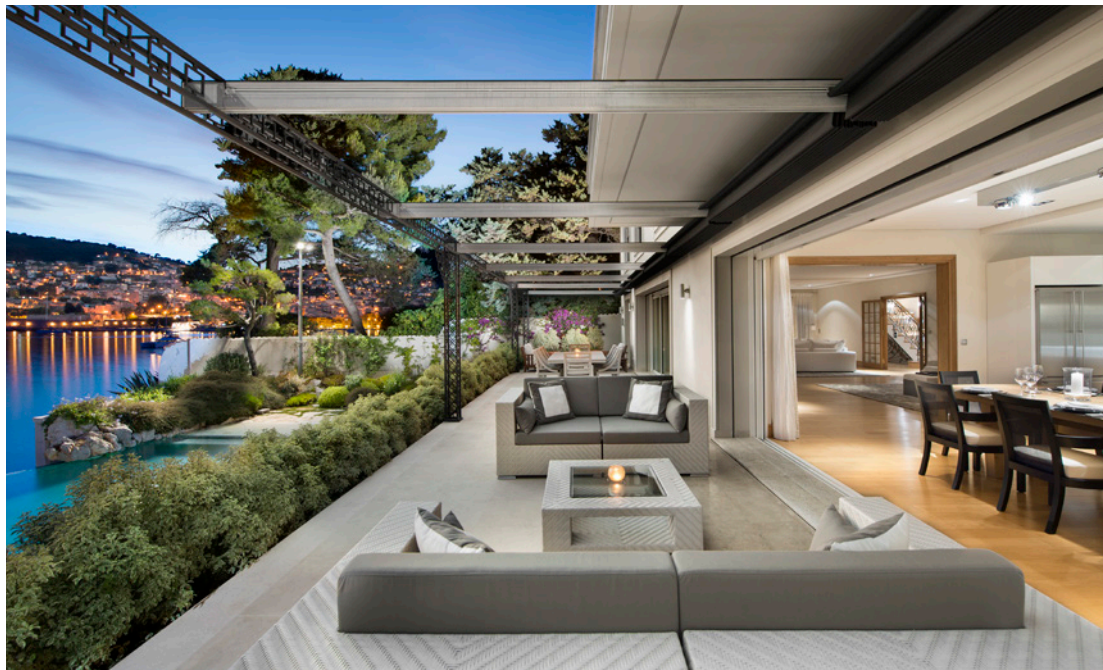
To be whisked away to this exclusive retreat, visit [www.oneauthenticproperties.com](http://www.oneauthenticproperties.com)



# ONE

MAS DE LA RUBÉ





## MAS DE LA RUBE

Imagine a tranquil waterside garden that is part of that classic bay, framed by two dramatic headlands, where an infinity pool seems to stretch to the horizon and steps lead down to the sea.

Surrounded by that cool green space, Mas de la Rube stands a house that is at once separate from its landscape, yet also an integral part of it, a manicured semi-island paradise, surrounded by water on three sides. This is the unique setting for what is in effect, one of the world's most exclusive and personal private hotels.

To be whisked away to this exclusive retreat, visit [www.oneauthenticproperties.com](http://www.oneauthenticproperties.com)



15<sup>KM</sup>



**BEDROOMS 5**  
**SLEEPS 10**



15<sup>KM</sup>



**HEATED**  
**OUTDOOR**  
**11<sup>M</sup> X 7<sup>M</sup>**

**LIVING AREA 370<sup>M2</sup>**  
**TERRACE 190<sup>M2</sup>**  
**GARDEN 2,900<sup>M2</sup>**



# ONE

LA GABBIA





## LA GABBIA



15<sup>KM</sup>



**BEDROOMS 6  
SLEEPS 12**



**DIRECT ACCESS  
TO THE SEA**

**LIVING AREA 350<sup>2</sup>  
TERRACE 250<sup>M2</sup>**

Both rare and listed, La Gabbia has been lovingly restored to its former wonder, maintaining its original architecture but crafting a designer interior of marble, parquet, fine art and bespoke furniture. Facing west, La Gabbia is blessed with nightly sunsets over the Bay of Villefranche Sur Mer, one of the most beautiful bays on earth.

Spaces are light-filled and extravagant, designed for calm contemplation or, equally, for entertaining.

To be whisked away to this exclusive retreat, visit [www.oneauthenticproperties.com](http://www.oneauthenticproperties.com)



# ONE

BAYVIEW







## BAYVIEW, VILLEFRANCHE SUR MER



15<sup>KM</sup>



**BEDROOMS 5**  
**SLEEPS 10**



15<sup>KM</sup>



**HEATED**  
**OUTDOOR**  
**12<sup>M</sup> X 4<sup>M</sup>**

**LIVING AREA 300<sup>M2</sup>**  
**TERRACE 100<sup>M2</sup>**  
**GARDEN 2,800<sup>M2</sup>**

An eagle's nest built against a hillside, Bayview appears sculpted from the rock itself. Magnificent terraces – some intimate and shaded, others sweeping and extravagant – give a breath-taking panorama of the Bay of Villefranche/Mer and Cap Ferrat.

Spaces are light-filled and extravagant, designed for calm contemplation or, equally, for entertaining.

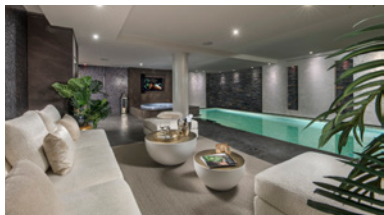
To be whisked away to this exclusive retreat, visit [www.oneauthenticproperties.com](http://www.oneauthenticproperties.com)

# ONE

LE BLANCHOT







## LE BLANCHOT, COURCHEVEL



110KM



**BEDROOMS 6**  
**SLEEPS 12**



4KM



**HEATED**  
**9M X 4M**

**TOTAL AREA 867M<sup>2</sup>**  
**SKI ROOM 1**

A place of sublime comfort, Le Blanchot's ultra modern facilities and features dovetail seamlessly with natural materials. A bespoke wrought-iron staircase that links each floor and leather-clad wall panels create a dramatic entrance into the high-ceilinged entertainment space, to dine at the refectory table or simply relax on deeply comfortable sofas.

Natural stones give each en-suite bathroom – together with the pool, steam room and Jacuzzi - its distinctive design, while the timber throughout has been painstakingly coloured to achieve a warmth and comfort befitting this unique mountain hideaway.

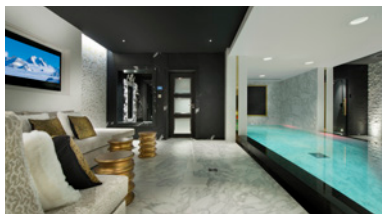
To be whisked away to this exclusive retreat, visit [www.oneauthenticproperties.com](http://www.oneauthenticproperties.com)



# ONE

LE COQUELICOT





## LE COQUELICOT, COURCHEVEL 1850



110KM



**BEDROOMS 6**  
**SLEEPS 12**



4KM



**HEATED**  
**10M X 4M**

**TOTAL AREA 900M<sup>2</sup>**

**TERRACE 49M<sup>2</sup>**

**SKI ROOM 1 (SKI IN/SKI OUT)**

Chalet Le Coquelicot blends refined finishes and exciting new materials with state-of-the-art equipment. The design echoes the magical surroundings and the splendid spa area is imbued with the spirit of the mountains, providing a relaxing sanctuary after a day on the slopes.

A perfect hideaway to relax and re-energise.

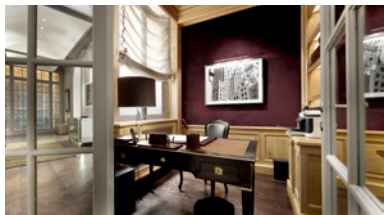
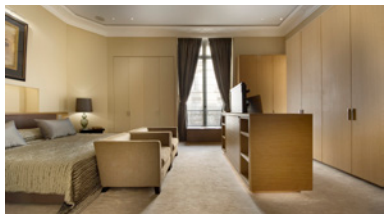
To be whisked away to this exclusive retreat, visit [www.oneauthenticproperties.com](http://www.oneauthenticproperties.com)



ONE  
POINCARÉ







## POINCARÉ, 16 ARRONDISSEMENT



21<sup>KM</sup>



**BEDROOMS 5  
SLEEPS 9**



6<sup>KM</sup>



**SECURED  
GARAGES 2**

**LIVING AREA 350<sup>M2</sup>**

This is a classic grand and imposing Haussmannien apartment that has been carefully reconfigured to offer a thoroughly contemporary space. Ceilings have been dropped to accommodate high-spec audio, lighting and air conditioning systems, and the apartment is furnished with a harmonious blend of antique Italian furniture and modern art.

The apartment is located in the heart of the 16<sup>e</sup> arrondissement – Paris' most prestigious district and is surrounded by world-famous museums, parks and iconic wide boulevards. It lies on the charming avenue that links the Trocadero with Place Victor Hugo.

To be whisked away to this exclusive retreat, visit [www.oneauthenticproperties.com](http://www.oneauthenticproperties.com)

